

EXAMPLES AND EXPLANATIONS OF THE ART I GLASS UNIT

# FAUX STAINED GLASS

---

# WHAT IS FAUX STAINED GLASS?

- Using clay, glaze, and melted glass to create a “mosaic-like” 3D work.
- We have the following glass colors:
  - Blue, Light Blue, Green, Olive/Yellow, Brown, and Clear.
- We have the following tint (underglaze) colors:
  - EVERY COLOR OF THE RAINBOW!

# Examples

What Melted Glass Looks Like

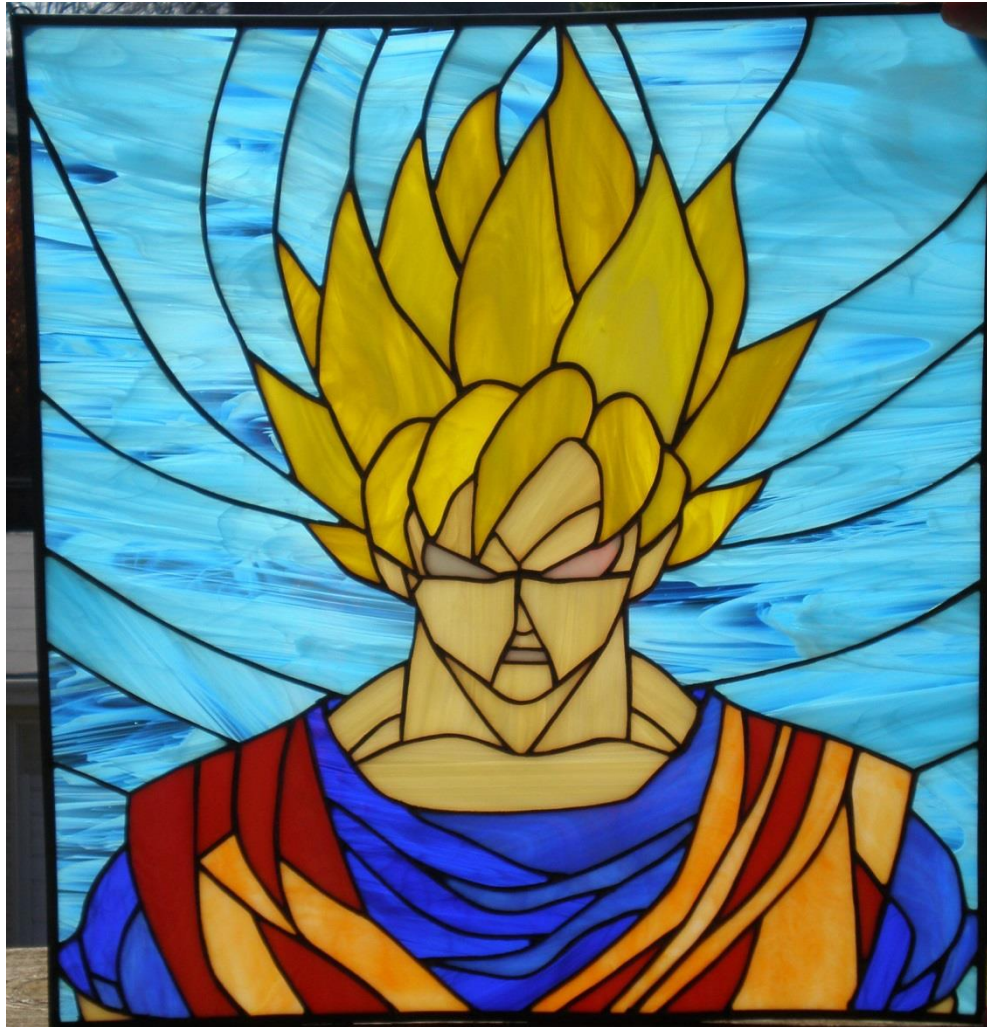


# Layout Examples

- Your work will be broken down into simple shapes!



# Layout Examples



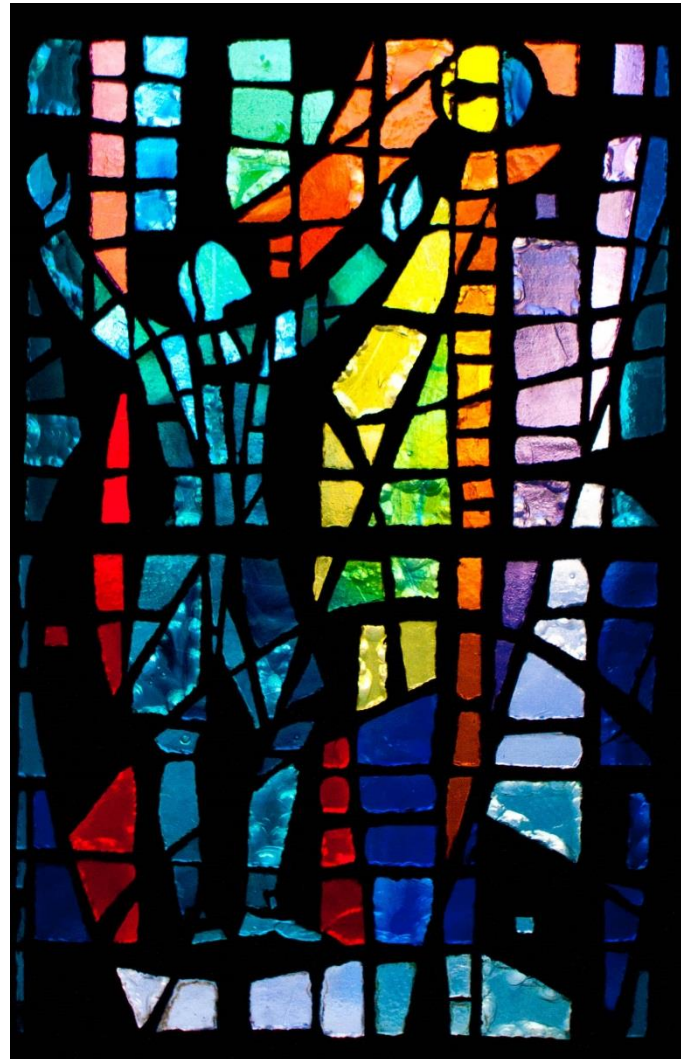
# Layout Examples



# Layout Examples

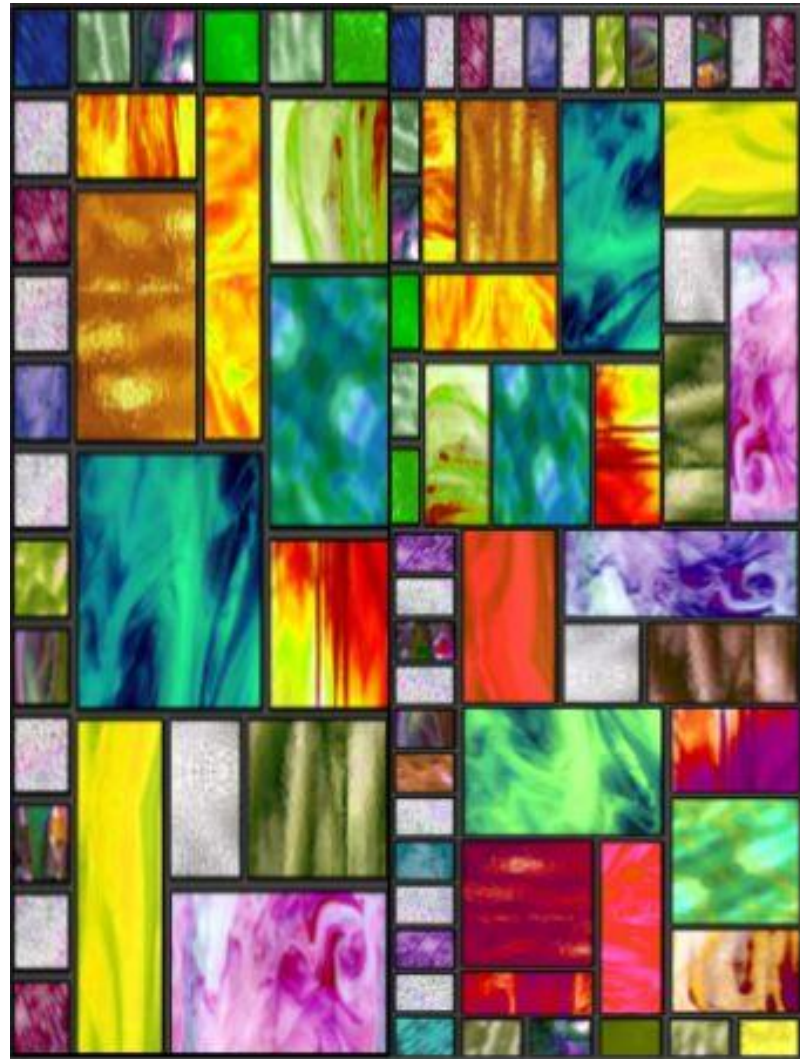


# Layout Examples





# Layout Examples



# Layout Examples



# Student Examples



# Student Examples



# Student Examples



# YOUR TASK

---

- Simplify 3 images for potential use.
- Add color and be specific.
- CHALLENGE YOURSELF!